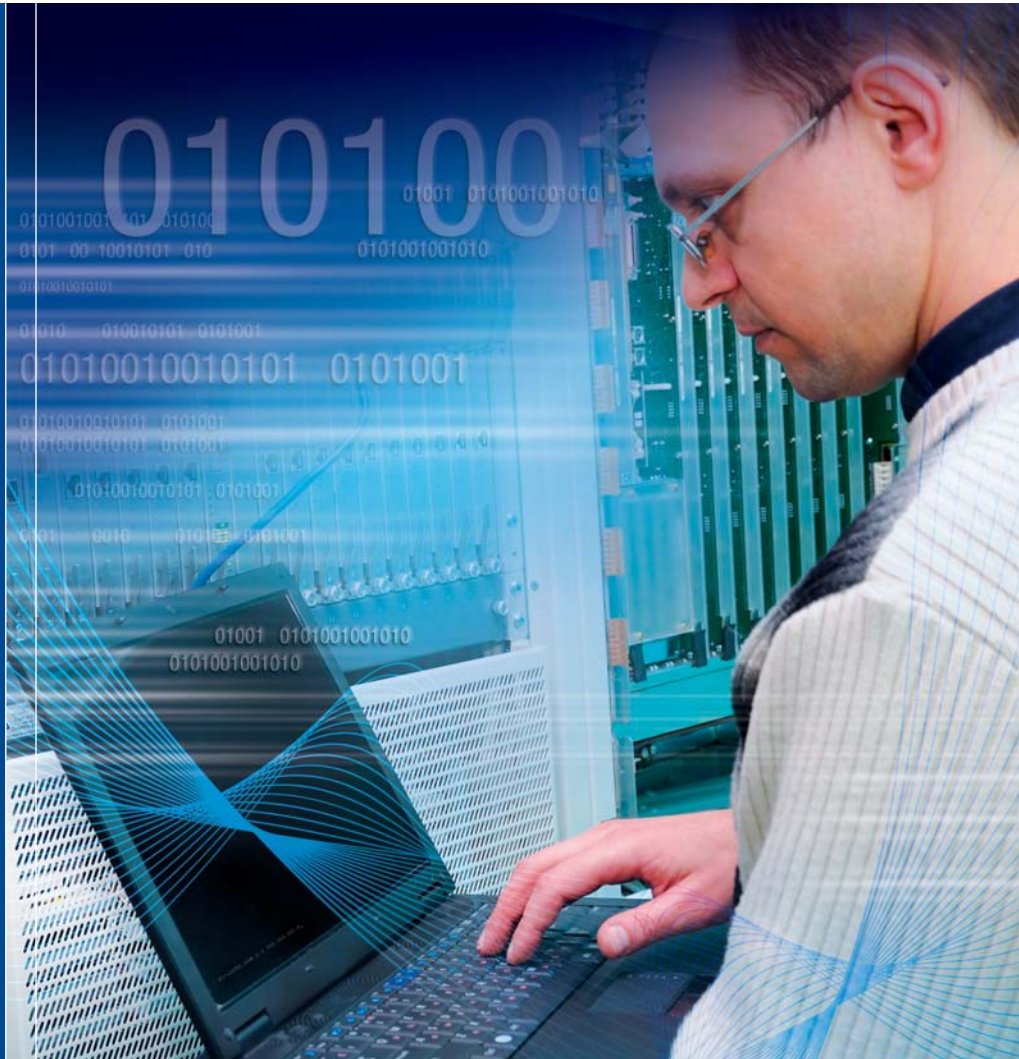


Belden® and Mayflex



Belden wire & cable solutions for high quality, top performance and total reliability.

Belden®: Sending All the Right Signals™

Belden is synonymous with high quality, high performance and reliability, all the time and in any market – broadcast, commercial networking, security, industrial, residential and many other applications. From industrial automation to data centers, cutting-edge wireless communications to consumer electronics, Belden is committed to delivering the best signal transmission solutions that bring voice, video and data to mission-critical applications.

Whilst we focus on providing the most cost effective solutions, customers tell us that Belden is the brand they can trust and rely on for dependable signal transmission. All Belden products are designed and manufactured to the strictest quality standards in the industry, resulting in an incomparable reputation for worldwide reliability and we have earned our worldwide reputation as an expert solution provider by providing all the data and backup support necessary to help you to make the right decision to meet your requirements and to solve your problems.

With ongoing research and development to bring to market the very best in signal transmission technology – copper, optical fiber, wireless etc., the product range has expanded to include complete system solutions including, for example; connectivity equipment, enclosures, cable raceways and racks.

Top 10 reasons why customers choose to work with Belden:

- 1) World-class products with proven superior performance.
- 2) Wide range of standard and tailored signal transmission solutions.
- 3) Fast delivery and ease of installation.
- 4) All key components manufactured and quality controlled in-house.
- 5) Reliability for minimum maintenance and maximum uptime.
- 6) Hassle-free and secure signal transmissions under the toughest conditions.
- 7) Technical support backed by extensive global resources.
- 8) Permanent analysis of market needs for continuous development of effective solutions.
- 9) 25 year warranty for Certified Belden IBDN systems installed by Belden Certified System Vendors.
- 10) Outstanding Channel Partners who deliver world-class customer service.





Mayflex: Outstanding Service

As a leading distributor of cabling infrastructure, networking and physical security products, Mayflex has a well-respected name and a proven track record in partnering installers, integrators and resellers. The Mayflex business model throughout Europe and the Middle East has come to represent the fast and efficient supply of advanced, reliable networking products, cabling infrastructure and physical security solutions.

Mayflex's reputation is built on the highest levels of service, support, technical innovation and product choice. These core values drive the plans for continued expansion.

World Class Supply Chain Services

With project timescales getting tighter, the operational capabilities of a supply chain partner are now as critical as the choice of product. Whichever option is chosen, a service that endeavors to deliver the products on time and to any chosen destination is guaranteed on a daily basis.

Driven by a motto of "Service Excellence, Through Experience and Flexibility", Mayflex's goal is to offer the most attractive combination of product availability, customer service and value for money within the sector and to provide every customer with the tools they need in order to prosper.



Belden® and Mayflex: A Partnership for Success

Mayflex is a Preferred Distributor for the Belden Structured Cabling product range within the UK and has been working closely with Belden for a number of years. Mayflex offers a comprehensive range of Belden products backed by outstanding customer service. Working with Mayflex, you will be able to access the world's best signal transmission products range, backed by expert and highly individual service.

This relationship enables you to benefit from:

- A single-source for all your Belden IBDN system needs
- Industry expertise and experience in networking
- Our commitment to Service Excellence

Become a Mayflex Partner Today

This brochure provides an overview of the products and support that Belden and Mayflex can offer you. **To place your order for Belden Structured Cabling Solutions call the infrastructure sales team on 0800 75 75 65.**

Structured Cabling Solutions

Why Belden®? Belden Goes Beyond the Standard!

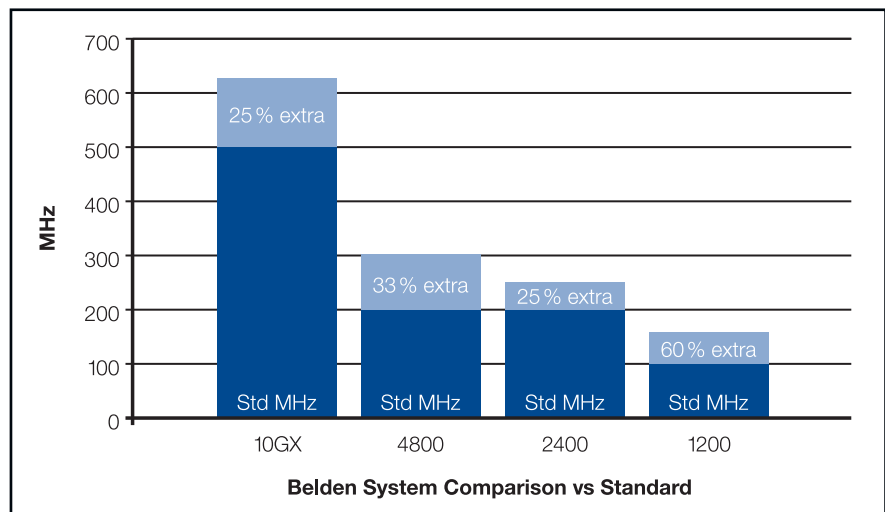
Each of the copper cabling components depicted on the following pages are vital to the overall performance of the network, but to achieve optimum network performance you should consider Belden IBDN® end-to-end structured cabling systems. Belden IBDN copper structured cabling systems are recognized the world over for their high quality as they are the result of both Belden's exceptional design and manufacturing expertise and the system's ability to outperform the standards.

Belden Systems vs Standards Category Performance

The Belden systems offering are wide, and covers all the current required categories. The Belden approach is to exceed standards. The below table provides an overview of the Belden systems and their performances:

Belden System	Bandwidth (Mhz)	Category Standard Performance	Standard Bandwidth (Mhz)	Belden Headroom Offered	Guaranteed Data Rates (Gb/s)
10GX	625	Cat 6a	500	25 %	10.0
4800	300	Cat 6	200	33 %	4.8
2400	250	Cat 6	200	25 %	2.4
1200	160	Cat 5e	100	60 %	1.2

Complete End-to-End Structured Cabling Solutions



The figures shown represent the % increase above the 1dB gain required in the (SNR) PSACR-N at the appropriate required frequency.

- Belden Bandwidth MHz Advantage v's Standard
- Standard Bandwidth MHz



Belden IBDN® System 10GX® – the Ultimate in 10 Gigabit Network Performance

The Belden IBDN 10GX System was designed specifically to support the mission-critical needs of data centers, server farms, storage area networks and campus backbones or network access nodes, without experiencing detrimental effects from alien interference.

If you are running bandwidth-intensive applications such as uncompressed high resolution digital video, medical imaging, digital animation, CAD/CAM, high-speed data storage or cluster computing, you would also benefit from the 10GX System and its industry leading throughput of data.

Why? Because the Belden IBDN 10GX System is the best end-to-end UTP structured cabling system in the industry today. It's performance exceeds both the TIA Category 6a and ISO Class EA standards and provides the end user with a guaranteed throughput rate of 10 Gb/s, with 625 MHz of useable bandwidth which is simply unique for any Category 6a system.

Description	Belden Part Number
-------------	--------------------

Belden IBDN System 10GX, Modules

MDVO-Style	
T568A/B, White	AX102271
T568A/B, Black	AX102272
Keystone-Style	
T568A/B, White	AX102282
T568A/B, Black	AX102283

Belden IBDN System 10GX, Patch Panels

10GX KeyConnect Patch Panels (Preloaded)	
10GX KeyConnect Patch Panel, 24-port, 1U, Titanium	AX103254
10GX KeyConnect Patch Panel, 48-port, 1U, Titanium	AX103264
10GX KeyConnect Patch Panel, 48-port, 2U, Titanium	AX103256

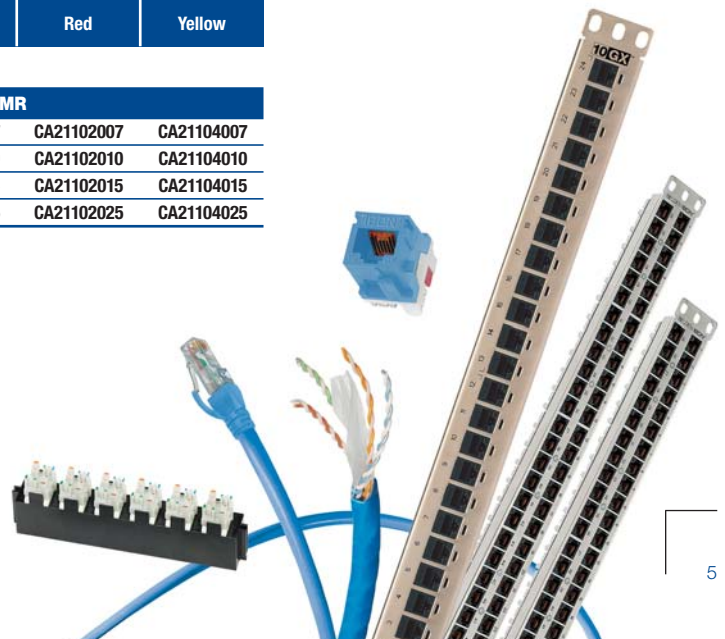
Belden IBDN System 10GX, Cables

Category 6a	
10GX Nonbonded-Pair, 4-pair, 23 AWG, LSNH, 305 m, purple	10GX24.07305

Description	Belden Part Number					
	Blue	White	Grey	Green	Red	Yellow

Belden IBDN System 10GX, Modular Cords

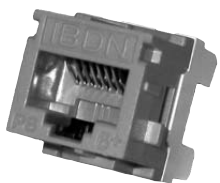
10GX Modular Cord • 4-bonded pair • 23 AWG solid • T568B – T568B, CMR						
2.1 m (7 ft.)	CA21106007	CA21109007	CA21108007	CA21105007	CA21102007	CA21104007
3.0 m (10 ft.)	CA21106010	CA21109010	CA21108010	CA21105010	CA21102010	CA21104010
4.6 m (15 ft.)	CA21106015	CA21109015	CA21108015	CA21105015	CA21102015	CA21104015
7.6 m (25 ft.)	CA21106025	CA21109025	CA21108025	CA21105025	CA21102025	CA21104025



IBDN® System 4800 – (Cat 6+, 4.8 Gb/s ATM, 300 MHz) State-of-the-art Performance Beyond Category 6

If every bit of information that is processed is mission critical, you need the performance and reliability that is built into the Belden® IBDN System 4800LX. This enhanced Category 6 system was conceived to support the most demanding, ultra-high speed and multi-Gigabit protocols, providing blistering performance.

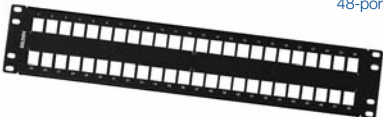
The Belden IBDN System 4800 exceeds the TIA Category 6 requirements and is the first system in the industry to guarantee 300 MHz of usable bandwidth. Its exceptional signal power and signal-to-noise performance characteristics make the system ideal for handling ultra-high speed and multi-Gigabit protocols and large volumes of voice, data, video and multimedia communications.



GigaFlex PS6+ Module



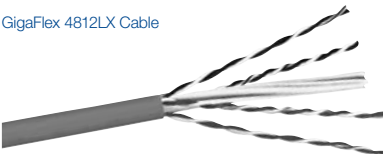
KeyConnect Patch Panel
48-port



GigaFlex PS6+ Modular Cord



GigaFlex 4812LX Cable



Description	Belden Part Number
-------------	--------------------

Belden IBDN System 4800LX, Modules

MDVO-Style

GigaFlex PS6+ Module, T568A/B, White	AX101065
GigaFlex PS6+ Module, T568A/B, Black	AX101066

Keystone-Style

GigaFlex PS6+ Module, T568A/B, White	AX101320
GigaFlex PS6+ Module, T568A/B, Black	AX101321

Belden IBDN System 4800LX, Patch Panels

Category 6+ KeyConnect Patch Panels (Preloaded)

Cat 6+ KeyConnect Patch Panel, 24-port, 1U, Black	AX103253
Cat 6+ KeyConnect Patch Panel, 48-port, 2U, Black	AX103255

KeyConnect Modular Patch Panels (Empty)

KeyConnect Patch Panel, 24-port, 1U, Black	AX103114
KeyConnect Patch Panel, 48-port, 2U, Black	AX103115
KeyConnect Patch Panel, 72-port, 2U, Black	AX103116
KeyConnect Patch Panel, 48-port, 1U, Black	AX103121

Belden IBDN System 4800LX, Cables

Beyond Category 6

GigaFlex 4824LX Cable, LSZH, 23 AWG, 305 m Spool, purple	4824.07305
--	------------

Description	Belden Part Number					
	Blue	White	Grey	Green	Red	Yellow

Belden IBDN System 4800LX, Modular Cords

GigaFlex PS6+ Modular Cord • LSZH • 4-pair • 23 AWG solid • T568B – T568B

0.5 m (1.6 ft.)	AX102356	AX102350	AX102392	AX102544	AX102550	AX102556
1.0 m (3.3 ft.)	AX102357	AX102351	AX102393	AX102545	AX102551	AX102556
2.0 m (6.5 ft.)	AX102358	AX102352	AX102394	AX102546	AX102552	AX102556
3.0 m (10 ft.)	AX102359	AX102353	AX102395	AX102547	AX102553	AX102559
5.0 m (16.4 ft.)	AX102360	AX102354	AX102396	AX102548	AX102554	AX102560
10.0 m (33 ft.)	AX102361	AX102355	AX102397	AX102549	AX102555	AX102561



IBDN® System 2400 – (Cat 6, 2.4 Gb/s ATM, 250 MHz) Category 6 Performance for Leading-Edge Communications

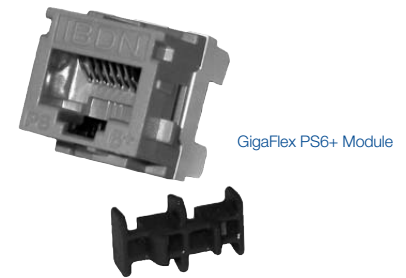
The Belden IBDN System 2400 provides the performance, throughput and reliability necessary to keep critical applications operating at peak performance. If leading-edge communication systems are an element of your customer's competitive strategy and information technology is a key driver of the bottom line, they should consider the speed, reliability and performance advantages of the System 2400.

This Category 6 system meets or exceeds all requirements of the TIA/EIA Category 6 standard specifications and delivers 250 MHz bandwidth, a 25% increase over the 200 MHz bandwidth of typical Category 6 compliant channels. The cable itself maintains an average overall diameter not exceeding that of a typical Category 5e cable, reducing overall containment requirements.

Description	Belden Part Number
-------------	--------------------

Belden IBDN System 2400, Modules

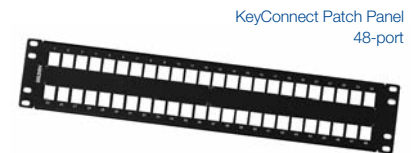
MDVO-Style	
GigaFlex PS6+ Module, T568A/B, White	AX101065
GigaFlex PS6+ Module, T568A/B, Black	AX101066
Keystone-Style	
GigaFlex PS6+ Module, T568A/B, White	AX101320
GigaFlex PS6+ Module, T568A/B, Black	AX101321



GigaFlex PS6+ Module

Belden IBDN System 2400, Patch Panels

Cat 6+ KeyConnect Patch Panels (Preloaded)	
Cat 6+ KeyConnect Patch Panel, 24-port, 1U, Black	AX103253
Cat 6+ KeyConnect Patch Panel, 48-port, 2U, Black	AX103255
KeyConnect Modular Patch Panels (Empty)	
KeyConnect Patch Panel, 24-port, 1U, Black	AX103114
KeyConnect Patch Panel, 48-port, 2U, Black	AX103115
KeyConnect Patch Panel, 72-port, 2U, Black	AX103116
KeyConnect Patch Panel, 48-port, 1U, Black	AX103121



KeyConnect Patch Panel 48-port

Belden IBDN System 2400, Cables

Beyond Category 6	
GigaFlex 2412LX Cable, CMR, 24 AWG, 305 m box, blue	2412D.06A305
GigaFlex 2413LX Cable, CMP, 24 AWG, 305 m box, blue	2413 D15A1000
GigaFlex 2424LX Cable, LSZH, 24 AWG, 305 m box, purple	2424D.07A305

GigaFlex PS6+ Modular Cord



Description	Belden Part Number					
	Blue	White	Grey	Green	Red	Yellow

Belden IBDN System 2400, Modular Cords

GigaFlex PS6+ Modular Cord • LSZH • 4-pair • 23 AWG solid • T568B - T568B						
0.5 m (1.6 ft.)	AX102356	AX102350	AX102392	AX102544	AX102550	AX102556
1.0 m (3.3 ft.)	AX102357	AX102351	AX102393	AX102545	AX102551	AX102556
2.0 m (6.5 ft.)	AX102358	AX102352	AX102394	AX102546	AX102552	AX102556
3.0 m (10 ft.)	AX102359	AX102353	AX102395	AX102547	AX102553	AX102559
5.0 m (16.4 ft.)	AX102360	AX102354	AX102396	AX102548	AX102554	AX102560
10.0 m (33 ft.)	AX102361	AX102355	AX102397	AX102549	AX102555	AX102561

GigaFlex 2424 Cable



IBDN® System 1200 – (Cat 5e, 1.2 Gb/s ATM, 160 MHz) Category 5e Performance for High-Speed Gigabit Ethernet

This Category 5e system was developed to support high-speed network applications such as Gigabit Ethernet and compressed video, providing clear bandwidth up to 160 MHz; an increase of 60% over the Category 5e standard of 100 MHz. Standards organizations such as TIA/EIA and IEEE now recommend Category 5e cabling systems for all new cabling installations.

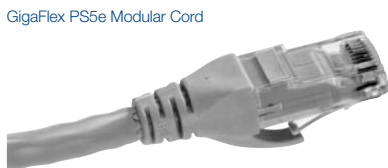
The increased headroom of the IBDN System 1200 is less susceptible to electrical noise than more traditional Category 5e systems that operate merely to industry standards.



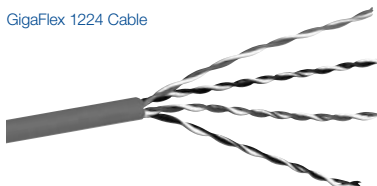
GigaFlex PS5e Module



KeyConnect Patch Panel
24-port



GigaFlex PS5e Modular Cord



GigaFlex 1224 Cable

Description	Belden Part Number
Belden IBDN System 1200, Modules	
MDVO-Style	
GigaFlex PS5e Module, T568A/B, White	AX101046
GigaFlex PS5e Module, T568A/B, Black	AX101047
Keystone-Style	
GigaFlex PS5e Module, T568A/B, White	AX101309
GigaFlex PS5e Module, T568A/B, Black	AX101310

Belden IBDN System 1200, Patch Panels	
KeyConnect Modular Patch Panels (Empty)	
KeyConnect Patch Panel, 24-port, 1U, Black	AX103114
KeyConnect Patch Panel, 48-port, 2U, Black	AX103115
KeyConnect Patch Panel, 72-port, 2U, Black	AX103116
KeyConnect Patch Panel, 48-port, 1U, Black	AX103121

Belden IBDN System 1200, Cables	
Category 5e • 24 AWG • UTP • 4-pair	
GigaFlex, CMP, 24 AWG, 305 m Box, blue	1213 D15U1000
GigaFlex 1224, LSZH, 24 AWG, 305 m Box, purple	1224.07U305
GigaFlex 1212LX Cable, CMR, 24 AWG, 305 m box, blue	1212.06U305

Description	Belden Part Number					
	Blue	White	Grey	Green	Red	Yellow
Belden IBDN System 1200, Modular Cords						
GigaFlex PS5e Modular Cord • LSZH • 4-pair • 23 AWG stranded • T568B - T568B						
0.5 m (1.6 ft.)	AX102344	AX102338	AX102386	AX102526	AX102532	AX102538
1.0 m (3.3 ft.)	AX102345	AX102339	AX102387	AX102527	AX102533	AX102539
2.0 m (6.5 ft.)	AX102346	AX102340	AX102388	AX102528	AX102534	AX102540
3.0 m (10 ft.)	AX102347	AX102341	AX102389	AX102529	AX102535	AX102541
5.0 m (16.4 ft.)	AX102348	AX102342	AX102390	AX102530	AX102536	AX102542
10.0 m (33 ft.)	AX102349	AX102343	AX102391	AX102531	AX102537	AX102543



Belden® Shielded Solutions

Belden Shielded Solutions comprise a full suite of shielded cables, modular jacks, patch cords, pigtails and patch panels for a complete end-to-end shielded installation.

Effective shielding can protect cables from signal ingress or egress, as well as triboelectric or other mechanical noise. With a growing need for more sophisticated shielding solutions, system designers need to find the right shielding solution for each application.

Belden Shielded Solutions have been developed to exceed industry standards relating to the TIA, ISO and MICE specifications. Belden

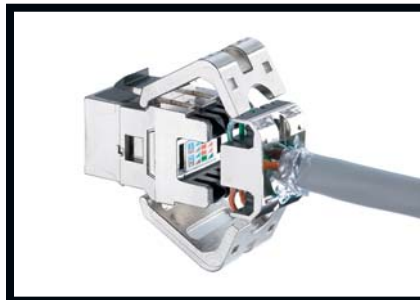
has surpassed all channel, permanent link and component compliant specifications and has been independently verified and tested by Delta Laboratories, Denmark.

Shielded Tool less Modular Jack

At the heart of the Belden Shielded Solutions is a shielded 'Tool less' modular jack, a high quality, easy to install jack. Its metallization consists of 3 conductive layers providing both effective shielding as well as low shield resistance. This helps to provide superior shielding performance without compromising the size and ease of use of the UTP connector.



Module



Cable preparation



Terminated in 75 seconds

Four Connector Channel Model

Belden Shielded Systems have undergone extensive internal testing procedures in line with relevant standards. Prior to introducing these new systems, Belden has conducted extensive tests using over 100 different cabling configurations, including short links, long links, worst cases and the most demanding 4 connector channel configurations. These tests were performed at frequencies up to 250 MHz.

All transmission parameters were tested, including attenuation, NEXT, FEXT and Return Loss. The test results prove very good and consistent matching of components and excellent end-to-end performance. Moreover, these systems have been independently verified in both channel and link configurations by Delta Laboratories in Denmark.

Belden® Shielded Solutions



Description	Colour	Part Number
-------------	--------	-------------

KeyConnect Tool less Modular Jack

Shielded		
Cat 5e	Metallic	NN01360
Cat 6	Metallic	NN01361
Cat 6a	Metallic	Available from Q1 2011

KeyConnect Shielded Patch Panels

Unloaded		
24 Port 1U	Black	NN01400
48 Port 2U	Black	NN01401

Description	Belden Part Number					
	Blue	Grey	Green	Yellow	Red	White

Belden Shielded Patch Cords

Cat 6 • LSNH • S/FTP • 26 AWG • Stranded						
0.5 m	NN01297.06CD5	NN01297.08CD5	NN01297.05CD5	NN01297.04CD5	NN01297.02CD5	NN01297.09CD5
1.0 m	NN01297.06C1	NN01297.08C1	NN01297.05C1	NN01297.04C1	NN01297.02C1	NN01297.09C1
2.0 m	NN01297.06C2	NN01297.08C2	NN01297.05C2	NN01297.04C2	NN01297.02C2	NN01297.09C2
3.0 m	NN01297.06C3	NN01297.08C3	NN01297.05C3	NN01297.04C3	NN01297.02C3	NN01297.09C3
5.0 m	NN01297.06C5	NN01297.08C5	NN01297.05C5	NN01297.04C5	NN01297.02C5	NN01297.09C5
10.0 m	NN01297.06C10	NN01297.08C10	NN01297.05C10	NN01297.04C10	NN01297.02C10	NN01297.09C10

Cat 5e • LSNH • F/UTP • 26 AWG • Stranded						
0.5 m	NN01296.06CD5	NN01296.08CD5	NN01296.05CD5	NN01296.04CD5	NN01296.02CD5	NN01296.09CD5
1.0 m	NN01296.06C1	NN01296.08C1	NN01296.05C1	NN01296.04C1	NN01296.02C1	NN01296.09C1
2.0 m	NN01296.06C2	NN01296.08C2	NN01296.05C2	NN01296.04C2	NN01296.02C2	NN01296.09C2
3.0 m	NN01296.06C3	NN01296.08C3	NN01296.05C3	NN01296.04C3	NN01296.02C3	NN01296.09C3
5.0 m	NN01296.06C5	NN01296.08C5	NN01296.05C5	NN01296.04C5	NN01296.02C5	NN01296.09C5
10.0 m	NN01296.06C10	NN01296.08C10	NN01296.05C10	NN01296.04C10	NN01296.02C10	NN01296.09C10

Belden Shielded Pigtails

Cat 6 • LSNH • SF/UTP • 24 AWG • Stranded						
5.0 m	NN01313.06C5	NN01313.08C5	NN01313.05C5	NN01313.04C5	NN01313.02C5	NN01313.09C5
10.0 m	NN01313.06C10	NN01313.08C10	NN01313.05C10	NN01313.04C10	NN01313.02C10	NN01313.09C10

Cat 5e • LSNH • SF/UTP • 24 AWG • Stranded						
5.0 m	NN01307.06C5	NN01307.08C5	NN01307.05C5	NN01307.04C5	NN01307.02C5	NN01307.09C5
10.0 m	NN01307.06C10	NN01307.08C10	NN01307.05C10	NN01307.04C10	NN01307.02C10	NN01307.09C10

Description	Colour*	Part Number
-------------	---------	-------------

Cables

Category 6a • Non-bonded • LSNH		
F/FTP	Grey	1685ENH

Category 6 • Non-bonded • LSNH		
F/UTP	Grey, Blue, Purple	7860NBH, 7860NBC**
F/UTP twin	Grey, Blue, Purple	7868NBH
S/FTP	Grey, Blue, Purple	1885ENH, 1885ENC**
S/FTP twin	Grey, Blue, Purple	1887ENH, 1887ENC**

Category 5e • Non-bonded • LSNH		
F/UTP	Grey, Blue, Purple	1633ENH
F/UTP twin	Grey, Blue, Purple	1668ENH
SF/UTP	Grey, Blue, Purple	1633ENS

Also available in Bonded variation and lengths available in 305 m, 500 m and 1000 m.

* Other colours available upon request

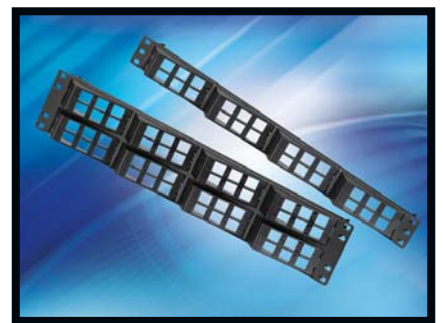
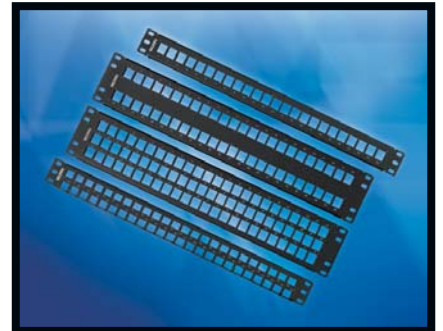
** Meets IEC 60332-3-24 flame retardancy



KeyConnect and AngleFlex™ Patch Panel Series

The KeyConnect Patch Panel Series is a comprehensive line of robust all-metal, preloaded and modular patch panels. The series provides a flexible, versatile and high density termination solution.

The AngleFlex™ Patch Panel Series offers better manageability and improved installation flexibility for Data Center and Telecommunication Room installations. Patent-pending angles provide left, right or bi-directional patch cord routing, more efficient switch connection and a shallower, low-profile design for more room inside cabinets. The angled inserts also eliminate the need for horizontal cable management, for a 27% space saving per rack.



Description	Belden Part Number
Patch Panels	
10GX KeyConnect Patch Panels (Preloaded)	
10GX KeyConnect Patch Panel, 24-port, 1U, Titanium	AX103254
10GX KeyConnect Patch Panel, 48-port, 2U, Titanium	AX103256
Cat 6+ KeyConnect Patch Panels (Preloaded)	
Cat 6+ KeyConnect Patch Panel, 24-port, 1U, Black	AX103253
Cat 6+ KeyConnect Patch Panel, 48-port, 2U, Black	AX103255
KeyConnect Modular Patch Panels (Empty)	
KeyConnect Patch Panel, 24-port, 1U, Black (Empty)	AX103114
KeyConnect Patch Panel, 48-port, 2U, Black (Empty)	AX103115
KeyConnect Patch Panel, 72-port, 2U, Black (Empty)	AX103116
KeyConnect Patch Panel, 48-port, 1U, Black (Empty)	AX103121
AngleFlex Patch Panels (Empty)	
AngleFlex Patch Panel, 24-port, 1U, Black (Empty)	AX103248
AngleFlex Patch Panel, 48-port, 2U, Black (Empty)	AX103249

KeyConnect Modular Jacks

The KeyConnect series of modular jacks fits both KeyConnect and AngleFlex™ Patch Panels with full modularity across all categories. Simply choose your required specification and colour.

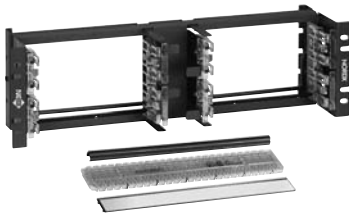
Description	Ordering Number		
Modular Jacks			
KeyConnect Modular Jacks			
Colour	10GX	Cat 6+	Cat 5e
Grey	AX102280	AX101318	AX101307
Almond	AX102281	AX101319	AX101308
White	AX102282	AX101320	AX101309
Black	AX102283	AX101321	AX101310
Ivory	AX103073	AX103078	AX103079
Orange	AX104152	AX104189	AX104182
Red	AX104153	AX104190	AX104183
Yellow	AX104154	AX104191	AX104184
Green	AX104155	AX104192	AX104185
Blue	AX104156	AX104193	AX104186
Purple	AX104157	AX104194	AX104187
Orange, TIA 606 Colour	AX102284	AX101322	AX101311
Red, TIA 606 Colour	AX102285	AX101323	AX101312
Yellow, TIA 606 Colour	AX102286	AX101324	AX101313
Green, TIA 606 Colour	AX102287	AX101325	AX101314
Blue, TIA 606 Colour	AX102288	AX101326	AX101315
Purple, TIA 606 Colour	AX102289	AX101327	AX101316

Belden® IBDN® GigaBIX System – Versatile, Space-saving Connectivity

The Belden IBDN GigaBIX Cross-Connect System offers easy installation and cable management, coupled with the industry's best performance-to-price ratio for high-density connectivity.

This uniquely designed system allows for very high termination density, while maintaining optimal ease of administration to accommodate typical adds, moves and changes – an essential part of any value-engineering project. The system allows up to 300 pairs on a single frame to be terminated in a very small area – a real advantage in environments where floor and wall-space are at a premium.

GigaBIX provides headroom for high-speed and emerging Gigabit applications with a data rate of up to 4.8 Gb/s ATM and a bandwidth of up to 300 MHz. GigaBIX allows large configuration and pair capacity, up to double that of conventional patch panel installations. In addition, GigaBIX can be used at the edge to eliminate unnecessarily long cable runs, minimize the number of telecommunication rooms required and implement controlled zone distribution.

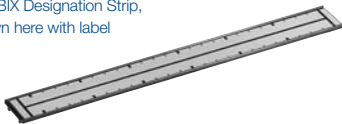


Rack Mount Termination Kit

GigaBIX Wire Guard



GigaBIX Designation Strip, shown here with label



GigaBIX PS6+ Patch Cord

Description	Belden Part Number
-------------	--------------------

GigaBIX Multi System

Termination Kits	
GigaBIX Termination Kit, 72-port	AX101470
GigaBIX Termination Kit, 300-pair	AX101471
GigaBIX Rack Mount Termination Kit, 48-port	AX101985
Basic Components	
GigaBIX Connector, 6-port	AX101447
GigaBIX Connector, 25-pair	AX101448
GigaBIX Mount, 12-connector	AX101472
GigaBIX Rack Mount Panel, 48-port	AX101986
GigaBIX Wire Guard	AX101486
GigaBIX Designation Strip	AX101483
GigaBIX/MediaFlex Adapter	AX101987

GigaBIX Multi System Patch Cords

PS6+ Patch Cords		
Colour	BIX-BIX	BIX-8MOD T568B-ALT
1.2 m (4 ft.)	AX101945	AX101957
1.8 m (6 ft.)	AX101946	AX101958
2.4 m (8 ft.)	AX101947	AX101959
3.0 m (10 ft.)	AX101948	AX101960
4.6 m (15 ft.)	AX101949	AX101961
7.6 m (25 ft.)	AX101950	AX101962
PS5E Patch Cords		
1.2 m (4 ft.)	AX101963	AX101975
1.8 m (6 ft.)	AX101964	AX101976
2.4 m (8 ft.)	AX101965	AX101977
3.0 m (10 ft.)	AX101966	AX101978
4.6 m (15 ft.)	AX101967	AX101979
7.6 m (25 ft.)	AX101968	AX101980

GigaBIX Multi System

Cross-Connect Wire	
4-pair, 305 m (1000 ft.), Spool	XCGB4 0001000
4-pair, 305 m (1000 ft.), Spool-in-Box	XCGB4 000A1000



Belden FiberExpress® – Fiber Solutions for Even Faster Performance

The Belden FiberExpress family of fiber solutions offers complete end-to-end cabling systems that support both centralized and fiber-to-the-desk topologies, as well as backbone and campus cabling configurations. Belden fiber solutions meet or exceed all applicable TIA/EIA, ISO/IEC and IEEE standards and offer:

- High bandwidth and transmission speed
- The potential for network growth
- Extended reach – distance
- Fault tolerance
- Greater data security
- Support for Gigabit and multi-Gigabit protocols and networked applications
- Reduced design complexities
- Quick installation
- Increased flexibility

Belden FiberExpress Ultra

The Ultra series of fiber solutions was designed specifically for mission critical data center installations and has a large number of user-friendly features. FiberExpress Ultra has been built around three core concepts: Ultra high density, ultra-easy installation and maintenance, ultra flexibility and manageability.

Belden FiberExpress

FiberExpress solutions are for fiber-to-the-desk or centralized cabling applications and the backbone infrastructure. FiberExpress Pre-Terminated systems are the ultimate solution for reliable, high volume installations. Based on the concept of building blocks, the complete range of pre-terminated FiberExpress components bring flexibility to the design stage. These products are “plug and go” and their deployment requires no specialized tools.

Belden FiberExpress@EASE

FiberExpress@EASE is the latest addition to Belden's FiberExpress family offering a high quality, cost-effective solution for standard small to medium-sized installations. With simple in-rack management and a choice of panels with pre-loaded fiber couplers for quicker and easier fiber management, FiberExpress@EASE sets a new standard in fiber patch panel solutions. Each SC and LC FiberExpress@EASE unit also incorporates a coupler management bar that enables the coupler to sit flush on the front face of the panel. This creates a greater bend radius and a better fit for patch cords within a standard rack for more compact and flexible installations.

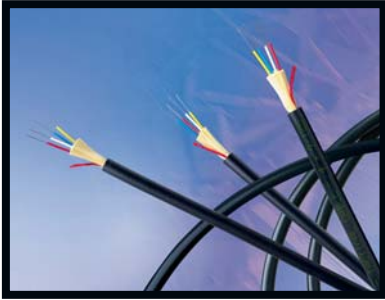
FiberExpress@EASE is designed and manufactured in the UK and offers the high quality you expect from Belden with space saving technology to offer improved installation times and a faster Return on Investment via:

- Simple 1u footprint
- Easier in-rack management
- Pre-loaded connectors ready for installation
- A choice of pre-loaded quantities of couplers
- Multiple splice trace options including FiberExpress Ultra, FiberExpress and most basic splice tools

Description	No. of ports	Belden Part Number
SC Duplex		
SC Duplex (Loaded)*		
MM, 12-port, SC Duplex, FOPP	12	NN01405.MM12
MM, 24-port, SC Duplex, FOPP	24	NN01405.MM24
SM, 12-port, SC Duplex, FOPP	12	NN01405.SM12
SM, 24-port, SC Duplex, FOPP	24	NN01405.SM24
ST Simplex (Loaded)		
MM, 12-port, ST Simplex, FOPP	12	NN01406.MM12
MM, 24-port, ST Simplex, FOPP	24	NN01406.MM24
MM, 48 Port, ST Simplex, FOPP	48	NN01406.MM48
FC Simplex (Loaded)		
SM, 12-port, FC Simplex, FOPP	12	NN01407.SM12
SM, 24-port, FC Simplex, FOPP	24	NN01407.SM24
SM, 48-port, FC Simplex, FOPP	48	NN01407.SM24
LC Duplex (Loaded)*		
MM, 12-port, LC Duplex, FOPP	12	NN01408.MM12
MM, 24-port, LC Duplex, FOPP	24	NN01408.MM24
SM, 12-port, LC Duplex, FOPP	12	NN01408.SM12
SM, 24-port, LC Duplex, FOPP	24	NN01408.SM24

* Other loading quantities available on request

Belden® FiberExpress® OFC Cables



The Belden FiberExpress line of Optical Fiber Cables offers a selection of the best optical fiber cable products Belden currently produces. Applying its unmatched resources, Belden has created a complete line of indoor and outdoor cable products in tight buffered and loose tube constructions.

Interconnect Cables

Featuring semi-tight buffer and tight buffer technology for easy cable preparation during termination.

- Semi-tight buffered fiber cables are available in dry or jelly-filled constructions; both have excellent strippability properties (100 cm).
- Tight-buffered fiber cables are dry constructions and designed for easy stripping in cable preparation (10 cm).

BreakOut Cables (BO)

Breakout cables are the preferred choice for direct termination methods. Each numbered fiber subunit is protected by a layer of aramid yarn and encased in a FRNC/LSNH jacket. The individual subunits are cabled and then jacketed with a flame resistant FRNC/LSNH compound. Each fiber uses either the tight buffer technology or semi-tight buffer technology for excellent fiber stripping.

Mini-Breakout Cables (Distribution)

These cables offer dry constructions with semi-tight or tight buffer technology for easier fiber stripping during cable preparation. They are perfect for both indoor and indoor/outdoor use.

Central Loose Tube (CLT) Cables

Central loose tube cables are designed either for indoor/outdoor applications or for outdoor use only as direct burial, duct and outside tray. For better performance, Belden only uses (non-dripping and silicone-free) jelly-filled loose tubes. The central loose tube series has a polyethylene or halogen-free jacket. These cables have been updated with a longitudinal watertightness swellable yarn for weather-resistance.

- Standard and improved rodent protection designs are available with up to 24 fiber counts.
- Central loose tube cables are also available with Corrugated Steel Tape (CST), Steel Wire Armour (SWA) or Fiber Reinforced Plastic armour (FRP) to protect the whole cable from mechanical damage and rodents.

Multi Loose Tube (MLT) Cables

Multi loose tube cables, with no aquagel between the tubes (dry core) or with jelly-filled cable core, are designed for direct burial, duct, outside tray and aerial applications. For better performance, Belden only uses (non dripping and silicone-free) jelly-filled loose tubes. Tubes and (where necessary) blind elements are S-Z stranded around the central element. The multi loose tube series has a High-Density Polyethylene (HDPE) or halogen-free jacket. These cables have been updated with water-blocking aramid or glass yarn. Standard and improved rodent protection designs are available with high fiber counts of up to 432 fibers.



How to Create Your Full Part Number

Before you can order your parts, you need to create a full part number. For some examples see below.

Positions 1-4: Select 4 Digital code for Construction of your cable (in this example GUVN)

Position 5: Select the required Fiber Type (in this example FX300/OM1)

Positions 6 and 7: Select the Fiber Count (in this example 24)

Full Part Number is: **GUVN124**

Position 1-4: Construction	Position 6-7: Fiber Count	Buffer	Description	Application	Fiber size (µm)
Central Loose Tube Cables (CLT)					
GOSN	1 to 24	Dry core	HDPE, Standard Rodent Protection, 1500N	Outdoor	250
GORN	1 to 24	Dry core	HDPE, Improved Rodent Protection, 3500N	Outdoor	250
GOVN	1 to 24	Dry core	HDPE, Improved Rodent Protection, 5000N	Outdoor	250
GOCN	1 to 24	Dry core	HDPE, Full Rodent Protection (CST)	Outdoor	250
GODN	1 to 24	Dry core	Double HDPE, Full Rodent Protection (CST)	Outdoor	250
GOFN	1 to 24	Dry core	HDPE, Full Rodent Protection (FRP)	Outdoor	250
GOWN	1 to 24	Dry core	Double HDPE, Full Rodent Protection (SWA)	Outdoor	250
GUSN	1 to 24	Dry core	LSNH, Standard Rodent Protection, 1500N	Indoor/Outdoor	250
GURN	1 to 24	Dry core	LSNH, Improved Rodent Protection, 3500N	Indoor/Outdoor	250
GUVN	1 to 24	Dry core	LSNH, Improved Rodent Protection, 5000N	Indoor/Outdoor	250
GUCN	1 to 24	Dry core	LSNH, Full Rodent Protection (CST)	Indoor/Outdoor	250
GUDN	1 to 24	Dry core	Double LSNH, Full Rodent Protection (CST)	Indoor/Outdoor	250
GUFN	1 to 24	Dry core	LSNH, Full Rodent Protection (FRP)	Indoor/Outdoor	250
GUWN	1 to 24	Dry core	Double LSNH, Full Rodent Protection (SWA)	Indoor/Outdoor	250

Position 5: Fiber Type	
FX300/OM1	1
FX600/OM2	2
FX2000/OM3	3
FXSM Enhanced/OS2	8

Buffered Fiber Cables

Interconnect Cables					
GIOS	1	Dry Semi-Tight	Pigtail, Strippable, FRNC/LSNH	Indoor	245
GIOT	1	Tight	Pigtail, FRNC/LSNH	Indoor	280
GUPP	2	-	Dropcable, FTTx fiber drop cable	Indoor/Outdoor	250
GIPZOE0	-	-	BreakOut Kit, Empty Tube, FRNC/LSNH	Indoor	-
Breakout Cables					
GIBS	4 to 24	Dry Semi-Tight	Strippable, FRNC/LSNH	Indoor	245
GIBT	5 to 24	Tight	FRNC/LSNH	Indoor	280
GUBT	6 to 24	Tight	FRNC/LSNH	Indoor/Outdoor	280
Distribution Cables					
GIMS	1 to 24	Dry Semi-Tight	Strippable, FRNC/LSNH	Indoor	245
GIMT	1 to 24	Tight	FRNC/LSNH	Indoor	280
GUMT	1 to 24	Tight	FRNC/LSNH	Indoor/Outdoor	280
GUXT	1 to 24	Tight	FRNC/LSNH, Improved Rodent Protection	Indoor/Outdoor	280

Positions 1-4: Select 4 Digital code for Construction of your cable (in this example GIPT)

Position 5: Select the required Fiber Type (in this example FX600/OM2)

Position 6: Select the diameter (in this example A)

Position 7: Select the Fiber Count (in this example 2)

Full Part Number is: **GIPT2A2**

Position 5: Fiber Type	
FX300/OM1	1
FX600/OM2	2
FX2000/OM3	3
FXSM Enhanced/OS2	8

Position 1-4: Construction	Position 7: Fiber Count	Buffer	Description	Application	Fiber size (µm)
Buffered Fiber Cables					
Interconnect Cables					
GIPS*	1	Dry Semi-Tight	Simplex, Strippable, FRNC/LSNH	Indoor	245
GIPT*	1	Tight	Simplex, FRNC/LSNH	Indoor	280
GIPS*	2	Dry Semi-Tight	Duplex, Strippable, FRNC/LSNH, figure 8	Indoor	245
GIPT*	2	Tight	Duplex, FRNC/LSNH, figure 8	Indoor	280
GIPS*	H	Dry Semi-Tight	Heavy Duplex, Strippable, FRNC/LSNH	Indoor	245
GIPT*	H	Tight	Heavy Duplex, FRNC/LSNH	Indoor	280

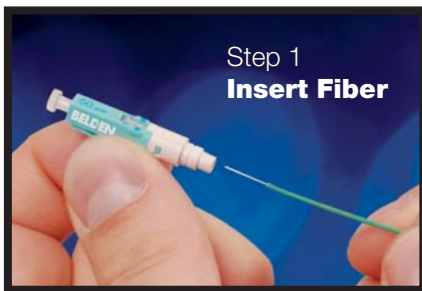
Diameter coding on Position 6 for Buffered Interconnect Cables	
A	1.6 mm
B	1.8 mm
C	2.0 mm
D	2.4 mm
E	2.8 mm
F	3.0 mm

FiberExpress® Brilliance® Field-Installable Connectors – Save Time, Labor and Material Costs

FiberExpress Brilliance Field-installable Connectors ensure reliable network performance by virtue of their superior design and manufacture, which includes use of the best materials available, expert polishing processes, and a 100% connector reliability test methodology. Quality of this kind enables Belden® to provide a 100% installation yield guarantee – even when the connectors are used in environments with temperatures ranging from -40°C to +75°C.

The patent-pending FiberExpress Brilliance Connector is the only fiber optic connector in the marketplace to overcome the key challenges of connector installation in the field, that is, it provides a quick and greatly simplified tool-less fiber termination process and the ability to quickly and reliably verify the termination once it is made.

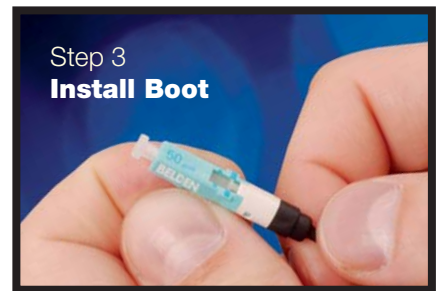
All it Takes is Three Simple Steps to Field Terminate a Fiber



1. Insert the fiber into the connector



2. Using your index finger, slide the connector's switch-like activator tab toward the fiber to be terminated to bring about the splice/crimp



3. Slide the boot on the connector body

That's it! You have effectively accomplished the splicing and crimping of the fiber in about five (5) seconds.

The fiber installation procedure is also accomplished without any specific/propriety installation tools, making the transition from any connector brand to the FiberExpress Brilliance Connector hassle-free. The FiberExpress Brilliance solution is more intuitive and the set-up less complex than any connector technology available.

Description	Belden Part Number	
	(1 per package)	(25 per package)
LC, 900 µm, Multimode 62.5 µm, OM1, Beige	AX104240-S1	AX104240-B25
LC, 900 µm, Multimode 50 µm, OM2, Black	A104241-S1	AX104240-B25
LC, 900 µm, Multimode 50 µm, OM3/OM4, Aqua	AX104242-S1	AX104242-B25
LC, 900 µm, Single-mode, OS2, Blue	AX104243-S1	AX104243-B25
SC, 900 µm, Multimode 62.5 µm, OM1, Beige	Available from Q4 2010	Available from Q4 2010
SC, 900 µm, Multimode 50 µm, OM2, Black	Available from Q4 2010	Available from Q4 2010
SC, 900 µm, Multimode 50 µm, OM3/OM4, Aqua	Available from Q4 2010	Available from Q4 2010
SC, 900 µm, Single-mode, OS2, Blue	Available from Q4 2010	Available from Q4 2010
ST, 900 µm, Multimode 62.5 µm, OM1, Beige	Available from Q4 2010	Available from Q4 2010
ST, 900 µm, Multimode 50 µm, OM2, Black	Available from Q4 2010	Available from Q4 2010
ST, 900 µm, Multimode 50 µm, OM3/OM4, Aqua	Available from Q4 2010	Available from Q4 2010
ST, 900 µm, Single-mode, OS2, Blue	Available from Q4 2010	Available from Q4 2010



Extended Warranties for Belden IBDN® Certified System Installations

Belden provides authorized Certified System Vendors (CSVs) with an extended 25 year Belden IBDN Component Warranty and a lifetime Application Assurance Program for all Belden IBDN Certified Systems installed by the CSV.

Both the extended Belden IBDN Component Warranty and the lifetime Application Assurance Program are offered to the CSV by Belden, in accordance with specific terms and conditions (available on request).

What is a “Certified System”?

A Belden IBDN Certified System is a structured cabling system that has been engineered, designed and installed by the CSV, acting as an authorized Belden CSV. The engineering, design and installation of the Belden IBDN System must be performed in accordance with all applicable Belden IBDN guidelines, Belden IBDN practices, and other Belden IBDN documentation in effect at the time of installation.

In order to maintain the validity of the extended Belden IBDN Component Warranty and the lifetime Application Assurance Program, the Belden IBDN Certified System must be maintained in accordance with the Belden IBDN User Manual in effect at the time of installation.

Extended Belden IBDN Component Warranty

Belden warrants that:

- The Belden IBDN passive components installed in the Belden IBDN Certified System are covered by a manufacturer's warranty against defects in material and workmanship for a period of 25 years from the date of installation, at the original installation location.
- The Belden IBDN Certified System will meet or exceed the UTP channel transmission requirements specified by:
 - ANSI/TIA/EIA 568-B.2-1, Category 6
 - ISO/IEC FDIS 11801:2002, Class E

Application Assurance

Belden's lifetime Application Assurance Program warrants that the Belden IBDN Certified System will be capable of supporting all industry standard Applications during its entire installation life at its original installation location. Industry standard Applications include:

- All Category 5, Category 5e and Category 6 Applications identified in the current (at time of installation) Belden IBDN documentation, and;
- Any Category 5, Category 5e and Category 6 Applications introduced at a future date by recognized standards bodies and user forums that use ANSI/TIA/EIA 568-B.1, ANSI/TIA/EIA 568-B.2-1, Category 6 and ISO/IEC FDIS 11801:2002, Class E UTP channel specifications for cabling.

For full details and terms and conditions of the Belden IBDN Certified Systems Warranty program please visit www.beldensolutions.com



Mayflex for the Full Range of Belden® Products with the Very Best Level of Service and Support

Order from 8.00 a.m. to 8.00 p.m.

The Mayflex sales teams are available between 8.00 a.m. and 6.00 p.m. and you can order via the XTRA online ordering facility until 8.00 p.m. to have your orders shipped for next day, free of charge delivery.

Service Excellence
Through Experience
and Flexibility.



Stock Availability

Mayflex aims to meet all customers' needs. The company holds a large amount of Belden products in stock for next day delivery.

Free Next Day Deliveries

Mayflex offers a free next day delivery service on all the items we have in stock to the UK Mainland.

Technical Expertise

Experienced technical support staff are on hand for a range of pre and post sales support services.

Projects Team

The Mayflex in-house Projects Team liaises with suppliers and customers in all aspects of major project tender support. They oversee both the commercial and financial elements of the project, ensuring that deadlines are met along with putting logistics in place.

Website

www.mayflex.com includes a wealth of information about the products and services that the company offers. 'XTRA', the Mayflex online partner area, provides customers with a full online ordering facility, the ability to check stock, create planning lists for regularly ordered products, review previous orders and general account information. Customers can also personalise a range of branded literature and specification sheets with their own company logo and details.



Track & Trace Facility

Customers can access the Track & Trace facility on the Mayflex website at any time. The company also offers email and text messaging to confirm the receipt of orders and deliveries.

Central Location

The Mayflex head office is based in Birmingham, within easy access of the M6 motorway, (just off junction 6). This makes it a prime site for holding meetings and training sessions.

Mayflex also has a sales office situated in the heart of London, opposite the landmark 'Gherkin' building. This is home to a London focused sales team and a suite of demonstration products. Both offices provide demonstration suites that include a selection of the Belden product range.



Quality

Mayflex is devoted to providing the best quality service and products. To demonstrate this commitment the company has the ISO 9001:2008 quality accreditation and the ISO 14001 Environmental Management System. Through obtaining this Mayflex has been able to identify ways to make massive reductions to the environmental impact. Having already managed an 80% reduction in waste being sent to landfill, the company is committed to further implementing its strategies and actions to ensure that it makes a positive contribution to the environment.

For more information and to place your orders for Belden Structured Cabling Solutions call the Mayflex sales team on **0800 75 75 65**.

This brochure includes details of a wide selection of Belden products. For details of items stocked in the UK and lead times for non-stock items please contact Mayflex on **0800 75 75 65**.

BELDEN GLOBAL LOCATIONS

To learn more about Belden visit us at
www.beldensolutions.com



MAYFLEX

Mayflex Head Office

Excel House
Junction Six Industrial Park
Electric Avenue
Birmingham B6 7JJ
United Kingdom

Phone: +44 (0) 121 326 7557
Fax: +44 (0) 121 327 1537
sales@mayflex.com
www.mayflex.com

Mayflex London Office

Holland House
4 Bury Street
London
EC3A 5AW
United Kingdom

Phone: +44 (0) 207 220 4455
Fax: +44 (0) 207 220 4450
londonenquiries@mayflex.com
www.mayflex.com

Mayflex Customer Service

0800 093 1202