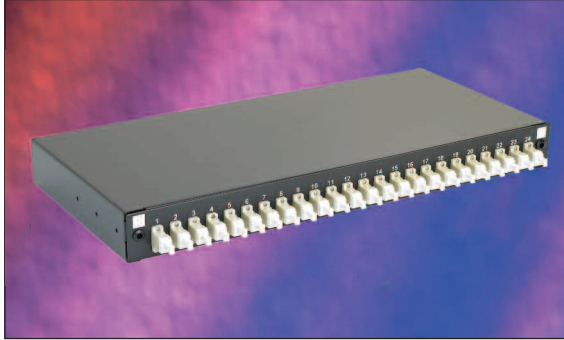


EXCEL

Excel Optical Fibre Patch Panel – Sliding Drawer – LC Style Multimode/Singlemode



Multimode and Singlemode

Sliding Drawer Design

Choice of Port Density

High Density – Upto 48 fibres

Management and Fixing Kit Included

Features

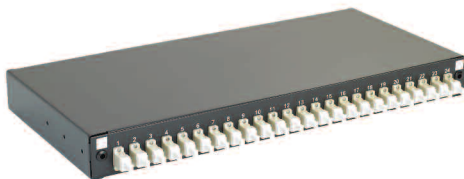
- 1U rack space design
- Upto 24 duplex adaptors per patch panel
- Available in multimode and singlemode
- Adjustable fixing arms included
- Port identification numbers
- Management kit included
- Multiple cable entry to rear

Product Overview

The Excel range of LC patch panels are sliding drawer 'tray style' housings suitable for either direct termination or splicing of upto 48 fibres in 1U of rack space. Each panel is manufactured from high quality 2mm thick steel and finished in Black powder coated paint to provide a strong and durable unit. To the front of the patch panel the specified number of duplex adaptors are loaded from left to right. The fascia also houses the release latches for the sliding drawer. Each panels utilises colour coded adaptors, Beige for multimode, Blue for singlemode. Each duplex adaptor accommodates two terminated fibres. Each panel has included within it a set of adjustable fixing arms, and a cable management pack which includes cable entry glands, cable ties, and a 24 way splice bridge.



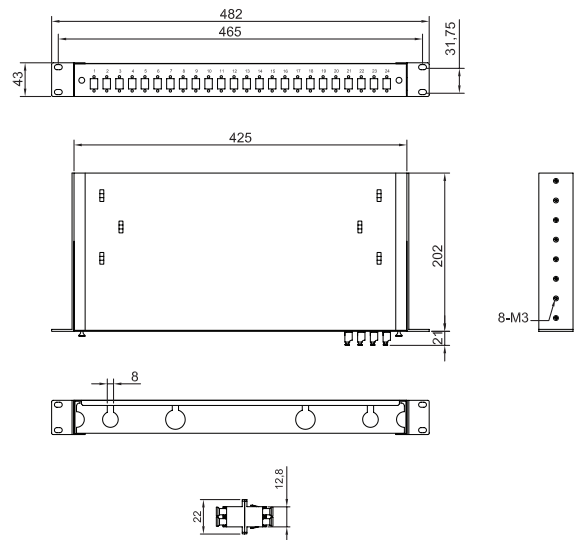
A. Sliding drawer design



B. Panels are available part or fully loaded



C. Adjustable fixing arms. clear port and panel labelling



D. Product dimensions, front, plan and rear view and fixing arms, shown in mm

Product Specification

Patch Panel		Adaptor	
Width (inc fixing arms)	482 mm	Multimode Insertion Loss	0.2dB Maximum
Depth	202mm	Singlemode Insertion Loss	0.3dB Maximum
Height	43mm	Durability	Min Life 500 Insertions
Colour	Black RAL9005	Multimode Adaptor Wavelength	850 to 1300nm
Operating Temperature	-25 to +40 °C	Singlemode Adaptor Wavelength	1310 to 1550nm
		Operating Temperature	-40 to +80 °C
		ROHS Compliant	Yes

Included Accessories

Item	Quantity
Cable gland (PG 13.5)	1
Cable gland (PG 19)	1
Nylon cable tie	10
Adjustable cable tie	6
12 Position splice holder	2
Label holder (210 x 9.2 mm)	2
Mounting twist tie	6
Blanking plug (RSB-19)	2
Blanking plug (RSB-25)	3
Cage nut and screw rack mounting kit	1 pack

System Warranty

When installed with Excel Fibre Cables and Components by an accredited Excel cabling partner this product is supported by a comprehensive 25 year product & applications warranty.

Part Number Information:

Multimode Optical Fibre Patch Panel - Black Sliding Drawer

Part No.	Description
200-460	1U 8 Fibre LC Patch Panel - 4 Duplex Adaptors
200-462	1U 16 Fibre LC Patch Panel - 8 Duplex Adaptors
200-464	1U 24 Fibre LC Patch Panel - 12 Duplex Adaptors
200-466	1U 48 Fibre LC Patch Panel - 24 Duplex Adaptors
200-413	1U 96 Fibre LC Patch Panel - 24 Quad Adaptors

Part Number Information:

Singlemode Optical Fibre Patch Panel - Black Sliding Drawer

Part No.	Description
200-470	1U 8 Fibre LC Patch Panel - 4 Duplex Adaptors
200-472	1U 16 Fibre LC Patch Panel - 8 Duplex Adaptors
200-474	1U 24 Fibre LC Patch Panel - 12 Duplex Adaptors
200-476	1U 48 Fibre LC Patch Panel - 24 Duplex Adaptors
200-419	1U 96 Fibre LC Patch Panel - 24 Quad Adaptors



Excel is a complete, end-to-end networking solution, offering exceptional performance and support, manufactured to European quality standards and covered by one warranty.

Contact us at sales@excel-networking.com

WWW.EXCEL-NETWORKING.COM